



2nd ANNUAL CONTEMPORARY, CHALLENGING AND CONTROVERSIAL ISSUES IN ELECTROPHYSIOLOGY

*A Case-Based Review with the
Leaders in Clinical Electrophysiology*

**SATURDAY and SUNDAY
NOVEMBER 5-6, 2011**

Course Directors

JONATHAN S. STEINBERG, MD

*Chief, Division of Cardiology
Endowed Director, Al-Sabah Arrhythmia Institute
St. Luke's and Roosevelt Hospitals
New York, NY*

SUNEET MITTAL, MD

*Director, Electrophysiology Laboratory
Al-Sabah Arrhythmia Institute
St. Luke's and Roosevelt Hospitals
New York, NY*

HUGH CALKINS, MD

*Director of Electrophysiology
Johns Hopkins Medical Institutions
Baltimore, MD*

RONALD D. BERGER, MD, PhD

*Director, Cardiac Electrophysiology Training Program
Johns Hopkins Medical Institutions
Baltimore, MD*

The Westin New York Hotel @ Times Square
270 West 43 Street, New York, NY 10036

Co-Sponsored by:

St. Luke's and Roosevelt Hospitals
Division of Cardiology
Al-Sabah Arrhythmia Institute



Heart Rhythm Society
Restoring the Rhythm of Life

Dear Colleague,

We hope you will be able to join us for this case-based review, with leaders in clinical electrophysiology, during which we will provide guidance and a sophisticated understanding of management techniques for patients that EP physicians are likely to encounter.

Topics and presentations have been specifically chosen in areas that are controversial, unsettled, clinically or technically challenging or undergoing an evolution in thinking. Included will be examples of cases that are difficult to manage in the early part of one's career or when functioning without the benefits of colleagues and senior staff. We aim to have a thorough, robust and interactive discussion with the audience, one that should lead to practical and clinical advantage.

By participating in this continuing medical education program, attendees will be better able to:

- Recognize the anatomic issues relevant to the diagnosis and treatment of a variety of SVTs, and specifically how to approach the patient with atrial tachycardia
- Appreciate the prevailing methods in use for the ablation of atrial fibrillation
- Learn the techniques being used to perform atrial fibrillation ablations in experienced centers, specifically for a variety of difficult clinical presentations
- Describe the indications for lead extraction
- Recognize the tools needed to gain successful LV lead placement during difficult CRT procedures
- Identify the skills necessary to interpret electrographic recordings during AF ablation
- Develop an understanding of the use of new implantable devices and the accepted clinical indications
- Define and distinguish between mechanisms based on ECG analysis
- Identify the appropriate techniques for treating VT storm
- Determine when VT originates from the epicardium and how to ablate
- Develop knowledge of the inherited VT syndromes

We hope that you can join us.

Sincerely,

Jonathan Steinberg, MD

Suneet Mittal, MD

Hugh Calkins, MD

Ron Berger, MD

TARGET AUDIENCE

This meeting is designed for junior electrophysiology attendings, electrophysiology fellows, nurses and other healthcare professionals with an interest in electrophysiology.

ACCREDITATION STATEMENT

Beth Israel Medical Center & St Luke's and Roosevelt Hospitals are accredited by the Accreditation Council on Continuing Medical Education to provide continuing medical education for physicians.

CREDIT DESIGNATION

St. Luke's and Roosevelt Hospitals designate this live activity for a maximum of 11.75 AMA PRA Category 1 Credits™. Physicians should only claim credit commensurate with the extent of their participation in the activity.

Program

SATURDAY, NOVEMBER 5, 2011

7:00 a.m. Registration & Continental Breakfast

8:00 a.m. Opening Remarks

Supraventricular Tachycardia

8:15 a.m. Anatomic Considerations for Ablating Tachycardias
Samuel J. Asirvatham, MD

9:00 a.m. Atrial Tachycardias: Approach to Diagnosis and Management
John M. Miller, MD

9:30 a.m. Coffee Break

Atrial Fibrillation

9:45 a.m. Audience Participation: Separating Fact from Fiction in AF Ablation
Hugh Calkins, MD

10:30 a.m. **Ablation Workshop:**
Challenging AF Ablation Scenarios
Complications of AF Ablation and Their Management – *Riccardo Cappato, MD*;
Post-Ablation Flutter – *Hugh Calkins, MD*;
Strategy for the 2nd Ablation – *John M. Miller, MD*;
Remote Magnetic Navigation: Useful Innovation or Expensive Toy? – *Jonathan S. Steinberg, MD*;
RF vs. Cryo for PAF – *Riccardo Cappato, MD*

12:05 p.m. Questions and Answers
(Moderator and Panelists)

12:30 p.m. Lunch with the Faculty

1:30 p.m.

Concurrent Workshops:

A. Allied Health Professional Focus:
Remote Monitoring and Management
Suneet Mittal, MD;
Tina Sichrovsky, MD

B. Difficult LV Lead Placements
Samuel J. Asirvatham, MD;
Andrew E. Epstein, MD

C. Lasso Recordings
Jonathan S. Steinberg, MD;
Riccardo Cappato, MD

D. Pearls and Pitfalls of Entrainment
Ronald D. Berger, MD, PhD;
John M. Miller, MD

Cardiac Rhythm Management Devices

2:30 p.m. Management of Fidelis Leads
Suneet Mittal, MD

2:50 p.m. MRI in Patients with Implanted Devices
Henry Halperin, MD

3:20 p.m. Making Sense of Class II Consensus Indications for Device Implantation
Andrew E. Epstein, MD

3:50 p.m. Device Troubleshooting Workshop
Drs. Berger, Epstein, Halperin, Mittal

**5:00 p.m.-
6:00 p.m.**

Cocktail Reception

SUNDAY, NOVEMBER 6, 2011

7:30 a.m. Registration & Continental Breakfast

8:00 a.m. Opening Remarks

Ventricular Tachycardia

8:05 a.m. Use of the ECG to Predict Mechanism and Origin of VT
William Stevenson, MD

8:45 a.m. Comprehensive Management of Frequent VT or Storm: What's in the Tool Box?
Kalyanam Shivkumar, MD, PhD

9:25 a.m. VT Workshop
William Stevenson, MD;
Kalyanam Shivkumar, MD;
Mark Preminger, MD

10:00 a.m. Coffee Break

10:15 a.m. Genetics of Inherited VT: Utility of Laboratory Testing
Charles Antzelevitch, PhD

11:15 a.m. How to Set Up an Epicardial Ablation Program
Kalyanam Shivkumar, MD, PhD

11:45 a.m. Case Studies of Inherited VT
William Stevenson, MD;
Hugh Calkins, MD;
Aysha Arshad, MBBS

12:30 p.m. Adjourn

POLICY ON FACULTY AND PROVIDER DISCLOSURE

It is the policy of Beth Israel Medical Center & St. Luke's and Roosevelt Hospitals that faculty and providers disclose real or apparent conflicts of interest relating to the topics of this educational activity, and also disclose discussions of unlabeled/unapproved uses of drugs or devices during their presentations. Beth Israel Medical Center & St. Luke's and Roosevelt Hospitals have established policies in place that will identify and resolve all conflicts of interest prior to this educational activity.

Faculty

PROGRAM DIRECTORS

JONATHAN S. STEINBERG, MD

*Professor of Medicine
Columbia University College of Physicians and Surgeons
Chief, Division of Cardiology
Al-Sabah Endowed Director of the Arrhythmia Institute
St. Luke's and Roosevelt Hospitals
New York, NY*

SUNEET MITTAL, MD

*Associate Professor of Clinical Medicine
Columbia University College of Physicians and Surgeons
Director, Electrophysiology Laboratory
Al-Sabah Arrhythmia Institute
St. Luke's and Roosevelt Hospitals
New York, NY*

HUGH CALKINS, MD

*Nicholas J. Fortuin Professor of Cardiology
Professor of Medicine
Director of Electrophysiology
Johns Hopkins Medical Institutions
Baltimore, MD*

RONALD D. BERGER, MD, PhD

*Professor of Medicine and Biomedical Engineering
Director, Cardiac Electrophysiology Training Program
Johns Hopkins Medical Institutions
Baltimore, MD*

FACULTY

CHARLES ANTZELEVITCH, PhD

*Executive Director/Director of Research
Gordon K. Moe Scholar
Professor of Pharmacology
Masonic Medical Research Laboratory
Utica, NY*

HENRY HALPERIN, MD

*David J. Carver Professor of Medicine
Professor of Radiology and Biomedical Engineering
Johns Hopkins University
Baltimore, MD*

SAMUEL J. ASIRVATHAM, MD

*Professor of Medicine, Division of Cardiovascular
Diseases
Professor of Pediatrics, Department of Pediatric and
Adolescent Medicine
Program Director, Mayo School of Graduate Medical
Education, College of Medicine
Vice Chair of Cardiovascular Innovation, Division of
Cardiovascular Diseases
Mayo Clinic College of Medicine
Rochester, MN*

JOHN M. MILLER, MD

*Professor of Medicine
Indiana University School of Medicine
Director, Clinical Cardiac Electrophysiology
Clarian Health System
Indianapolis, IN*

KALYANAM SHIVKUMAR, MD, PhD

*Professor of Medicine & Radiological Sciences
Director UCLA Cardiac Arrhythmia Center &
EP Programs
David Geffen School of Medicine at UCLA
Los Angeles, CA*

RICCARDO CAPPATO, MD

*Director
Center of Clinical Arrhythmia & Electrophysiology
IRCCS Policlinico San Donato Milanese
Milan, Italy*

WILLIAM STEVENSON, MD

*Professor of Medicine
Harvard Medical School
Director, Clinical Cardiac Electrophysiology Program
Brigham and Women's Hospital
Boston, MA*

ANDREW E. EPSTEIN, MD

*Professor of Medicine
University of Pennsylvania
Chief, Cardiology Section
Philadelphia VA Medical Center
Philadelphia, PA*

HOST FACULTY

St. Luke's and Roosevelt Hospitals – Al-Sabah Arrhythmia Institute

AYSHA ARSHAD, MBBS

*Assistant Professor of Medicine
Columbia University College of Physicians and Surgeons
Director, Lead Extraction Program and ECG Laboratory*

TINA SICHROVSKY, MD

*Assistant Professor of Medicine
Columbia University College of Physicians and Surgeons
Attending Physician*

MARK PREMINGER, MD

*Associate Professor of Clinical Medicine
Columbia University College of Physicians and Surgeons
Director, Implantable Arrhythmia Devices*

2nd ANNUAL CONTEMPORARY, CHALLENGING AND CONTROVERSIAL ISSUES IN ELECTROPHYSIOLOGY

A Case-Based Review with the Leaders in Clinical Electrophysiology

The Westin New York Hotel @ Times Square

SATURDAY & SUNDAY, NOVEMBER 5 – 6, 2011

Name _____ Title _____

Address _____

City _____ State _____ Zip _____

Phone _____ Fax _____

E-mail _____ Specialty _____

(Be sure to include your e-mail address as confirmation/receipt will be sent electronically)

Affiliation _____

WORKSHOPS

I plan to attend Workshop (please ✓ one) A B C D

TUITION FEE:

Place a ✓ in the appropriate box

- | | |
|---|----------|
| <input type="checkbox"/> Physicians | \$250.00 |
| <input type="checkbox"/> Continuum Staff, Fellows, Residents and Other Healthcare Professionals | \$100.00 |

Payment Methods:

- Online** Registration is available and is the preferred method – www.chpnet.org/cme
- Check** payable to SLRHC-CME is enclosed
Mail to: St. Luke's and Roosevelt Hospital, Office of CME
1111 Amsterdam Avenue, New York, NY 10025

- Fax** this form to 212-523-2074

Credit Card # _____ Exp Date _____

Amex MasterCard Visa

Signature _____ Date _____

ROOM RESERVATIONS

A limited number of rooms are available at the conference rate of \$259, plus applicable taxes until October 12, 2010 on a first-come, first-served basis. Call 1-888-627-7149 (international: 1-212-201-2700) and identify yourself as a participant in the St. Luke's Electrophysiology Conference. Reservations can also be made online at <http://www.starwoodmeeting.com/Book/StLukesElectrophysiologyAttendees>.

After October 12th, rates are subject to availability.

CANCELLATION POLICY:

A refund, less a \$50 administrative fee, will be issued upon written request. No refunds will be made after October 12th. St. Luke's and Roosevelt Hospitals reserve the right to cancel this program.

FURTHER INFORMATION:

St. Luke's and Roosevelt Hospitals, Office of Continuing Medical Education

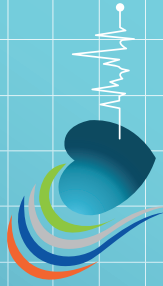
Phone: 212-523-2138 ■ Fax: 212-523-2074

Email: aroman@chpnet.org ■ Website: www.chpnet.org/cme

**St. Luke's
Roosevelt**

St. Luke's and Roosevelt Hospitals
1111 Amsterdam Avenue
New York, NY 10025

Continuum Health Partners, Inc.



2nd ANNUAL CONTEMPORARY, CHALLENGING AND CONTROVERSIAL ISSUES IN ELECTROPHYSIOLOGY

*A Case-Based Review with the
Leaders in Clinical Electrophysiology*

SATURDAY and **SUNDAY**
NOVEMBER 5-6, 2011

Non-Profit Org.
U.S. Postage
PAID
White Plains, NY
Permit No. 7033